



# Kanoya Daily Life Guidebook for Foreign Residents

Kanoya City



# Table of Contents

## General Information about Kanoya / Highlights of Kanoya ..... 2

Highlights of Kanoya

## Emergency Phone Numbers ..... 3

About ☎ 119 / About ☎ 110

## Consultation Desks for Everyday Advice ..... 4

Consultation for daily life / Residence status / Procedures for obtaining residence status / Employment and labor / Human rights consultations / Spousal violence / For other information

## Preparing for Natural Disasters ..... 5

Preparing for Natural Disasters / Disaster Information in Multiple Languages / Evacuation Information / Preparing for Storms and Typhoons / Actions to Take during an Earthquake

## Seeing a Doctor at a Hospital ..... 8

Major Symptoms and Medical Specialties / Nighttime and Holiday Emergency Medical Care System / Osumi Wide-Area Nighttime Emergency Medical Center

## Starting a New Life ..... 9

Moving to Kanoya / Moving within Kanoya / Moving from Kanoya

## Citizen's Services Procedures .....11

Death, Marriage, and Divorce Procedures / Procedures for Requesting Certificate of Residence / Personal Seal Registration System / My Number Card Procedure / Regarding Taxes

## Pregnancy and Children's Programs .....12

Pregnancy Procedures / Procedures for When a Child is Born / Systems for Parents and Guardians / Consultation and Reporting Child Abuse

## Welfare System .....13

System for Persons with Disabilities / When Nursing Care is a Necessity / Regarding Health Diagnoses

## How to Separate and Dispose of Household Garbage .....14

Trash Disposal Rules / Burnable Trash / Non-Burnable Trash / Recyclables / Plastic Items / Trash Not Collected by the City

## How to Ride the Bus .....19

## Public Transportation Systems .....20

## Daily Life & Bicycle Rules .....21

# ~ Welcome to Kanoya ~

This guidebook has administrative service information intended for making the lives of foreigners residing in Kanoya safe and comfortable. For specific service information, please call the respective division.

## Kanoya City Hall Contact Information

Name	Address	Phone Number	Description of Facility
Kanoya City Hall	20- 1, Kyoei-cho, Kanoya City	0994-43-2111	Municipal procedures and consultations are available.
Kanoya City Hall Aira Branch Office	3317, Fumoto, Aira-cho, Kanoya City	0994-58-7111	
Kanoya City Hall Kihoku Branch Office	3914, Kamimobiki, Kihoku-cho, Kanoya City	099-486-1111	
Kanoya City Hall Kushira Branch Office	2081, Okasaki, Kushira-cho, Kanoya City	0994-63-3111	
Kanoya City Hall Water and Sewage Division (Annex Building)	2-11-18, Kotobuki, Kanoya City	0994-43-2800	Procedures for starting and cancelling the use of water and sewage services are available.
Kanoya Health Care Consultation Center (Health Promotion Division)	11-6, Kitada-cho, Kanoya City	0994-41-2110	Consultations and procedures for various health checkups, vaccinations, and maternal and child health checkups are available.

## Information of Kanoya City and Events

### Kanoya City Website



\* Tap



\* Tap Foreign language

The Kanoya City Website is translated into each language using an automatic translation service provided by an external site.

\* Please note that some words might not be translated correctly because of translation by machine translation system.

### Smartphone App "Kanoya Life"



iOS version:



Android version:



### Kanoya International Exchange Association



Website



Facebook



Official LINE

# General Information about Kanoya

Kanoya is approximately in the center of Osumi peninsula in Kagoshima prefecture, and is the center of the peninsula's culture, agriculture, economics, and transportation. Kanoya has a population of around 100,000 people spread out in its area of 448.15 km<sup>2</sup>.

Kanoya is thriving in agriculture, livestock, and fishery taking advantage of the city's mild climate and rich natural environment with an average annual temperature of 17°C. Specialty products include Kurobuta pork, Kuroushi beef, sweet potatoes, great amberjack, and eels.

The Kanoya University of Health and Sport Science, a national university, and the Kanoya Air Base of the Maritime Self-Defense Force are located in the City, making the City's name well known throughout the country.



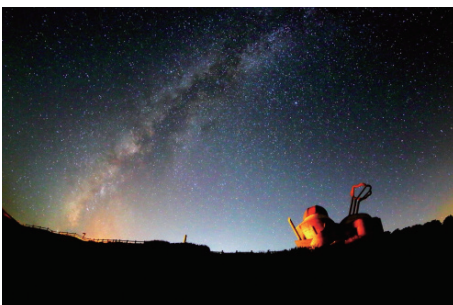
## Highlights of Kanoya



### ① Sugawara Shrine(Arahira Tenjin)

This shrine is located along Prefectural Route 68, with the Torii-gate on a sandy beach and the main shrine building on the top of a rocky hill. Sugawara Michizane, a god of literature, is enshrined in this shrine and many people visit to pray for success in school entrance examinations.

At high tide during the spring tide, the sandbar completely disappears under the water and the shrine seems to be located on a floating island, making it a famous scenic power spot.



### ② Kihoku Observatory and Kihoku Uwaba Park

An observatory whose special feature is its unique architecture. The astronomical observation dome houses one of Kyushu's largest telescopes, with an aperture of 65 cm. Even during the daytime, beautiful first-magnitude shining stars can be seen. There are also campsites and bungalows available for use in Kihoku Uwaba Park.



### ③ Kanoya Rose Garden

Boasting 1,500 varieties and 35,000 rose bushes within its 8 hectares, the Kanoya Rose Garden is Japan's largest rose garden. In the spring and fall the Kanoya Rose Festival is held. There is a restaurant within the garden grounds where you can try rose curry and rose ice cream.

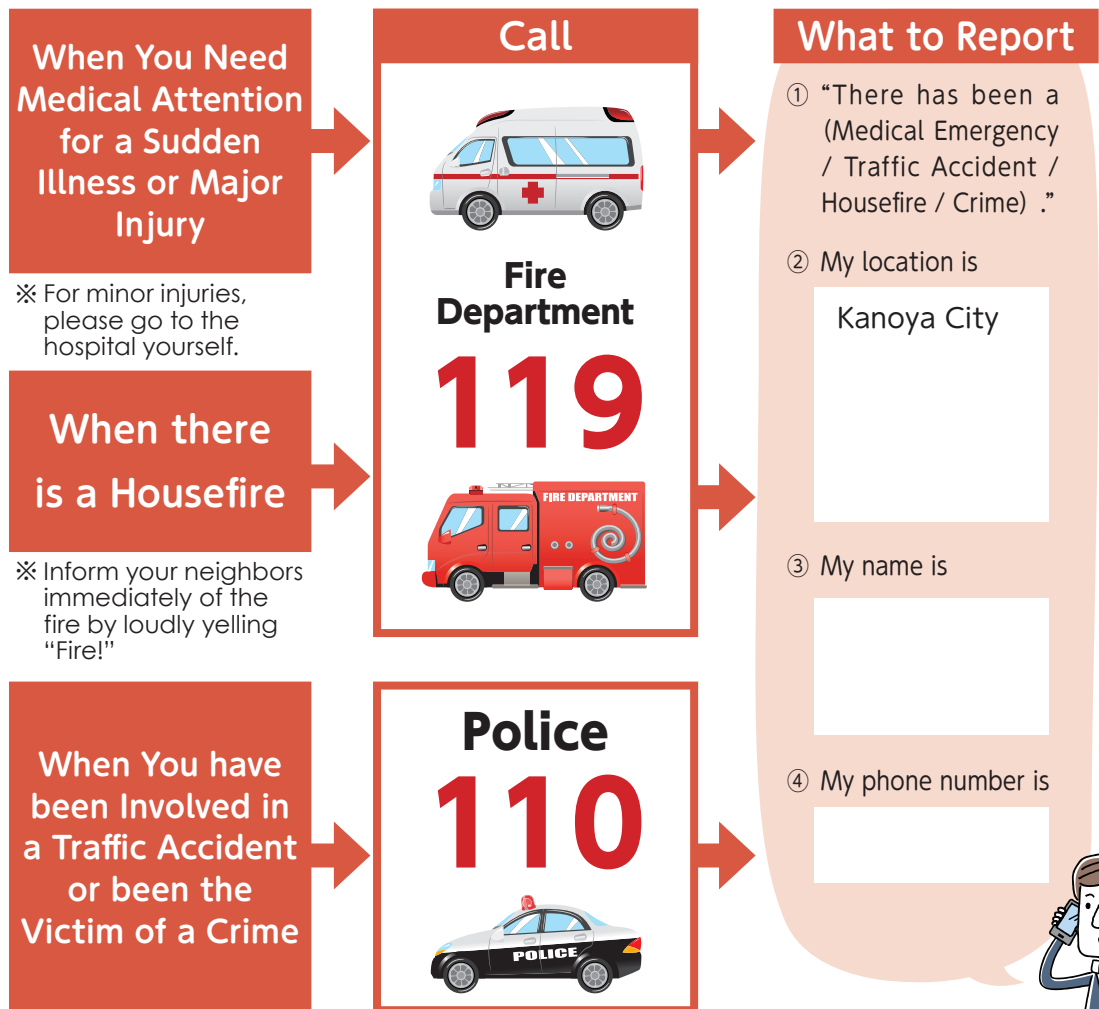
# Emergency Phone Numbers

## About 「☎119」

This is the telephone number to call when you need an ambulance to immediately take you to a hospital for a sudden illness or major injury or when you need a fire-engine for a housefire.

## About 「☎110」


This is the telephone number to call the police when you have been involved in a traffic accident or been the victim of a crime.



**☎119 and ☎110 are for Emergency Use ONLY.  
Do NOT call for consultation or questions.**

# Consultation Desks for Everyday Advice

◆ Consultation desks listed below are available according to the nature of consultation.






Nature of consultation	Consultation desk	Contacts	Reception hours
Consultation on daily life (employment, medical care, welfare, childbirth, child raising, etc.)	Kagoshima Prefecture Foreign Residents Consultation Desk (Website) <a href="https://www.kiaweb.or.jp/consultation.html">https://www.kiaweb.or.jp/consultation.html</a> 	Kagoshima Prefectural Citizens Exchange Center, 1F, 14-50, Yamashita-cho, Kagoshima City Phone: 070-7662-4541 * Supporting 23 languages including English, Vietnamese, Tagalog, Indonesian, Chinese, Korean, Nepali and Burmese	Tuesday to Sunday 9:00 to 17:00 (Excluding year end/new year holidays)
Residence status / Procedures for obtaining residence status	Fukuoka Regional Immigration Bureau, Kagoshima Branch Office	Kagoshima Port Joint Government Office Building (Kowan Godochosha), 3F, 2-5-1, Hamamachi, Kagoshima City Phone: 099-222-5658	Monday to Friday 9:00 to 12:00 13:00 to 16:00 (Excluding national holidays and year end/new year holidays)
	Immigration Information Center	3-5-25, Maizuru, Chuo-ku, Fukuoka City, Fukuoka Prefecture Phone: 0570-013904 (Phone from IP, outside Japan: 03-5796-7112) e-mail: info-tokyo@i.moj.go.jp	Monday to Friday 9:00 to 16:00 (Excluding national holidays and year end/new year holidays)
Employment & labor (working conditions, work-related accidents and injuries, dismissal, non-payment of wages, etc.)	Hello Work Kanoya (Job Introduction)	Kanoya Industry Support Center, 1F, 3-3-11, Kitada-cho, Kanoya City Phone: 0994-42-4135	Monday to Friday 8:30 to 17:15 (Excluding national holidays and year end/new year holidays)
	Kanoya Labor Standards Inspection Office (Consultation related to labor)	4-5-1, Nishihara, Kanoya City Kanoya Joint Government Office Building (Godochosha), 5F	Monday to Friday 8:30 to 17:15 (Excluding national holidays and year end/new year holidays)
Human rights counselling	Foreign-Language Human Rights Hotline	Ministry of Justice Phone: 0570-090911 * English, Chinese, Korean, Filipino, Portuguese, Vietnamese, Nepali, Spanish, Indonesian and Thai languages are available.	Monday to Friday 9:00 to 17:00 (Excluding year end/new year holidays)
Spousal violence (DV), intimate partner violence, etc.	Consultation Office for woman (Spousal Violence Counseling and Support Center)	20-1, Kyoei-cho, Kanoya City Kanoya City Hall Phone: 0994-31-1171 (Reservation required)	Monday to Friday 8:30 to 17:00 (Excluding national holidays and year end/new year holidays)
If you don't know which consultation desk to use	General Consultation Office	20-1, Kyoei-cho, Kanoya City * Check the descriptions on and after page 5 for more information on procedures and consultations at City Hall.	Monday to Friday 8:30 to 17:15 (Excluding national holidays and year end/new year holidays)

# Preparing for Natural Disasters

## Preparing for Natural Disasters (Safety and Security Division ☎0994-31-1124)

During times of natural disasters, evacuation information is released in accordance with a 5-level scale as illustrated in the graph below.

Regularly review the locations of and routes to the evacuation shelters closest to your home in order to escape quickly in the case of a disaster.

Alert Level	Situation	Announcing Agency
Level 1	<p>■<b>Be Cautious of The Coming Weather and Heighten Your Awareness of Natural Disasters.</b></p> <p>There is a possibility the weather will become severe and cause a natural disaster. (See page 6)</p> 	Japanese Meteorological Agency
Level 2	<p>■<b>Review Your Evacuation Routes and Evacuation Shelter Locations.</b></p> <p>There is a high possibility a warning will be issued for heavy rain, severe storms, etc.</p> 	Japanese Meteorological Agency
Level 3	<p>■<b>Evacuate the People who Need Extra Time to Evacuate!!</b></p> <p>A natural disaster is predicted to occur. The elderly and their caregivers, and other groups of vulnerable individuals who take more time to evacuate should start evacuating. Others who feel that they are in danger should also start to evacuate.</p> 	Kanoya City
Level 4	<p>■<b>Quickly Evacuate Everyone to a Safe Location!!</b></p> <p>There is an extremely high risk of a natural disaster occurring. Everyone in a region where an official Level 4 alert has been issued should immediately start evacuating the area. If your home is in a safe area, take refuge in your home. If your home is in a dangerous region, evacuate to an evacuation shelter or other safe location. Because the established evacuation centers differ based on the type of natural disaster, check the Kanoya City website for the latest information.</p> 	Kanoya City
Level 5	<p>■<b>Do Your Best to Protect Your Own Life!!</b></p> <p>A natural disaster has already started to occur. Everyone should take the highest precautions to protect their lives when evacuating.</p> 	Kanoya City

**In times of natural disaster, evacuate to a safe place to protect yourself such as your or your friend's homes, or evacuation shelters.**

# Preparing for Natural Disasters

## Natural Disaster Information in Multiple Languages.

### ◆ Natural Disaster Information Service App: “Safety Tips”(Japan Tourism Agency)

Supporting 14 languages (English, Chinese (simplified and traditional), Korean, Spanish, Portuguese, Vietnamese, Thai, Indonesian, Tagalog, Nepali, Khmer, Burmese, Mongolian and Japanese)

You can download the app below.

iOS  
version:



Android  
version:



### ◆ NHK World JAPAN

International News and Natural Disaster Information in multiple languages aimed at foreigners living in Japan/

<https://www3.nhk.or.jp/nhkworld/ja/>

You can download the app below.

iOS  
version:



Android  
version:



## Evacuation Information for Kanoya City

Natural disaster and evacuation information provided by Kanoya City.

### ◆ Kanoya City Official Facebook



### ◆ Kanoya City Official LINE



### Smartphone App 「かのやライフ」 (Kanoya Life)



iOS  
version:



Android  
version:



### FM Kanoya Radio (77.2MHz)



▲ Kanoya City  
Natural Disaster Map



▲ Evacuation  
Shelter List

You can check the Kanoya Hazard Map and Evacuation Centers List. Check the information on a daily basis to be prepared for disasters.



# Preparing for Natural Disasters

## Preparing for Storms and Typhoons

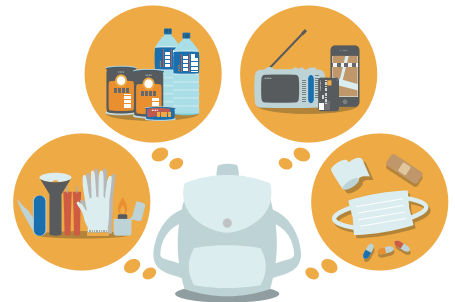
### ◆ Typhoons

- Because strong winds are likely, lock your home's doors and close window shutters.
- Bring items placed around your home (such as plants or bicycles) inside or secure them so that they will not get picked up by the strong winds.
- Because items are likely to be flying in the air due to the strong typhoon winds, do not leave your house. Return quickly if you leave your house.
- Pay attention to the television or radio weather information and be aware of the situation around your home. Voluntarily evacuate if you feel that you are in danger. (See page 6)
- Evacuate immediately if City Hall or the fire department issue an evacuation order.



### ◆ Evacuation

- Turn off the electric breakers and turn off the gas and other sources of potential fire.
- Wear clothing that is easy to move in, and if possible, evacuate in groups of two or more.
- Use safe roads when evacuating, if possible.
- When evacuating, prepare and take with you three days' worth of food and water, valuable items, daily medications, a flashlight, a lighter, and a radio.
- If you fail to escape, run to the nearest safe and sturdy building.



## Actions to take during an Earthquake

- Protect your body. (Hide underneath a table. Protect your body from falling objects or furniture.)
- Once the earthquake has stopped, quickly turn off the electric breakers and turn off the gas and other sources of potential fire. Open a door or window to secure your exit for evacuation. Put on shoes to protect your feet.
- When escaping, walk on wide roads and avoid walking near mountains, cliffs, or brick walls which may fall on you.
- Get correct information from the radio or television and think about what actions you will take after evacuating.



# Seeing a Doctor at a Hospital

## Major Symptoms and MEDICAL Specialties

Symptoms	Medical specialties
Fever, sore throat, cough, runny nose, headache, abdominal pain, etc.	Internal medicine
Injury, cut, bone fracture, joint pain, etc.	Surgery, orthopedics
Burns, rash, itching, hives, etc.	Dermatology
Babies and children's diseases	Pediatrics
Eye diseases	Ophthalmology
Dental pain, dental treatment, etc.	Dentistry
Women's diseases, childbirth, diseases during pregnancy	Obstetrics and gynecology
Ear and nose diseases	Otolaryngology, otorhinolaryngology
When you do not know which medical specialty to go to	General hospital

## Nighttime and Holiday Emergency Medical Care System

Use the Osumi Wide-Area Nighttime Emergency Medical Center or the doctor on duty on holidays when you need to receive medical care for sudden illnesses at night or on holidays. However, unlike weekday daytime hospital care, treatment is only first-aid treatment, and as a rule, only one day's worth of medicine is prescribed. After undergoing first-aid treatment, see your family doctor or other doctor.

		Weekdays	Sundays & Holidays
Daytime	Each specialty	Family doctor	Doctors on duty at home (internal medicine, pediatrics, surgery)
Nighttime	Internal medicine, pediatrics, surgery	Osumi Wide-Area Nighttime Emergency Medical Center	

Information on doctors on duty at home is provided on the City's Website, official bulletin KANOYA and "Kanoya Life" (app).

iOS  
version:



Android  
version:



## Osumi Wide-Area Nighttime Emergency Medical Center

Address	14-18, Kyoei-cho, Kanoya City (across the street from the City Hall)
Clinic days	Everyday (open all year round)
Clinic hours	7:00 p.m. to 7:00 a.m. the next day (Reception: 6:30 p.m. - 6:30 a.m. the next day)
Medical specialties	Internal Medicine, Pediatrics, Surgery

### ◆ Contact ☎0994-45-4119

\* Telephone consultations regarding sudden illnesses are also available, and nurses and other staff will advise you on first-aid measures and the need for seeing a doctor. If you are not sure whether or not to see a doctor, or if you suspect an infectious disease, please use the telephone consultation service.

# Starting a New Life

## I Moving to Kanoya or Changing Residences in Kanoya

### ① Procedures for Moving to Japan from Abroad

#### ◆ Notification of Change of Address (Foreign Move In) (Citizen Affairs Division ☎0994-31-1114)

This is the procedure to become a resident of Kanoya City.  
Notification must be made within 14 days after obtaining residence status.

Consultation Desk	Citizen Affairs Division, Any General Citizen's Support Service Division, or Any Branch Office
Notifier	Yourself and others in your same household ※Please call if you need to submit the paperwork by proxy.
Required Documentation	• Residence Card or Special Permanent Resident Certificate • Passport

#### ◆ National Pension (Citizen Affairs Division ☎0994-31-1114)

If you live in Japan and are 20 years of age or more but less than 60 years of age, you are required by law to join the National Pension Plan and pay the premiums. Follow the enrolment procedures for it. If you have difficulty in paying the premiums, there is a system of exemption from paying the premiums, so please consult with us. If you are an employee of a company or a public employee and join the Employees' Pension Insurance, apply for this pension at your place of employment.

#### ◆ National Health Insurance and Later-Stage Elderly Healthcare System (Health Insurance Division ☎0994-31-1162)

This is a public healthcare system that is funded through the health insurance tax in order to reduce the amount individuals pay when they go to the hospital. Registration paperwork is required for individuals who qualify for the following two systems.  
Furthermore, take special care of your insurance card, as you will need to bring it when you go to the hospital.

##### ● National Health Insurance

For individuals who are up to 74 years old and are not enrolled in their employer's health insurance.

##### ● Later-Stage Elderly Healthcare System

For individuals age 75 and older, or individuals age 65 to 74 who have a permanent disability.

### ② Procedures for Moving to Kanoya from Another Area within Japan

#### ◆ Notification of Change of Address (Domestic Move In) (Citizen Affairs Division ☎0994-31-1114)

You must complete and submit this paperwork within 14 days of moving to Kanoya.

Consultation Desk	Citizen Affairs Division, Any General Citizen's Support Service Division, or Any Branch Office
Notifier	Yourself and others in your same household ※Please call if you need to submit the paperwork by proxy.
Required Documentation	• Residence Card or Special Permanent Resident Certificate • Change of Address Certificate • Individual Number Card

#### ◆ National Health Insurance and Later-Stage Elderly Healthcare System (Health Insurance Division ☎0994-31-1162)

## Join Your Local Neighborhood Association!

Neighborhood Associations are groups of neighboring citizens that will help others in their neighborhood.

The benefits of joining your neighborhood association are as follows:

- Receive notices and information regarding events from City Hall
- Enjoy various events created by your neighbors
- Help each other during natural disasters

If you want to confirm which neighborhood association you belong to, obtain the contact information of the head of your association, or register with your neighborhood association, call the Regional Promotion Division at the number below.

[Contact] Regional Promotion Division ☎0994-31-1147

# Starting a New Life

## ③ Procedures for Moving within Kanoya

### ◆ Notification of Change of Address (Domestic Relocation) (Citizen Affairs Division ☎0994-31-1114)

You must complete and submit this paperwork within 14 days of changing your address.

Consultation Desk	Citizen Affairs Division, Any General Citizen's Support Service Division, or Any Branch Office
Notifier	Yourself and others in your same household ※Please call if you need to submit the paperwork by proxy.
Required Documentation	• Residence Card or Special Permanent Resident Certificate • Individual Number Card • National Health Insurance Card (Enrollee) , etc.

## ④ Procedures for When Starting to Use City Water Services (Operations Division ☎0994-43-2800)

If you have started living in (moved into) Kanoya City and want to use the city water service at home, you need to follow the procedures for starting to use the city water services.

You can choose to pay your water bill with a payment slip or by bank transfer.

\*Those who have moved (moved in) within Kanoya City are also required to follow the procedures for cancelling and starting use of city water services.



## 2 Moving out of Kanoya

### ① Procedures for Moving from Kanoya to Another Area

#### ◆ Notification of Change of Address (Move Out)(Citizen Affairs Division ☎0994-31-1114)

You are required to notify us as soon as you have decided the date and the destination you move to (within about 14 days).

Consultation Desk	Citizen Affairs Division, Any General Citizen's Support Service Division, or Any Branch Office
Notifier	Yourself and others in your same household ※Please call if you need to submit the paperwork by proxy.
Required Documentation	• Residence Card or Special Permanent Resident Certificate • National Health Insurance Card (Enrollee) , etc.

#### ◆ National Health Insurance and Later-Stage Elderly Healthcare System (Health Insurance Division ☎0994-31-1162)

Complete the Insurance Card Return paperwork. You will need to bring your insurance card.

### ② Procedure for When Cancelling City Water Services (Operations Division ☎0994-43-2800)

If you move out of Kanoya City, you are required to discontinue city water service and settle your water bill. You can choose the payment method for the settlement of your water bill with a payment slip or by bank transfer.

## Regarding Children's Education

In the Japanese education system, compulsory education includes 6 years of elementary school and 3 years of middle school. The school year starts in April and ends the next year in March. Children must have reached age 6 by April 1<sup>st</sup> to enter their first year in elementary school. If your child needs to transfer schools in elementary or middle school, or if you have any concerns, call the School Education Division at the number below.

# Citizen's Services Procedures

## ① Death, Marriage, and Divorce Procedures (Citizen Affairs Division ☎0994-31-1114)

All of the paperwork is required.

## ② Procedures for Requesting Certificate of Residence (Citizen Affairs Division ☎0994-31-1114)

The Certificate of Residence is a document that states an individual's address, name, birthdate, etc. If you need a Certificate of Residence, request one from the consultation desk as written below.

Consultation Desk	Citizen Affairs Division, Any General Citizen's Support Service Division, or Any Branch Office	Fee	¥ 200
Applicant	Yourself and others in your same household ※Please call if you need to submit the paperwork by proxy.		
Required Documentation	• Residence Card, Special Permanent Resident Certificate, or other Photo Identification issued by a government agency such as a Driver's License (restricted to identification within its period of validity) , Identification that can be used to confirm your identity, etc.		

## ③ Personal Seal Registration System (Citizen Affairs Division ☎0994-31-1114)

Take your personal seal to City Hall to officially register it.

Officially registered personal seals can be used as proof of identity. Each person is only allowed one officially registered seal. Because the name on the seal is restricted to your name as listed on your Certificate of Residence or a part of your full name, please check that your seal is admissible with the consultation desk. After registration, you will be issued a Kanoya Citizen's Card that acts as a Registered Personal Seal Certificate.

Consultation Desk	Citizen Affairs Division, Any General Citizen's Support Service Division, or Any Branch Office	Fee	¥ 200
Applicant	Yourself ※Please call if you need to submit the paperwork by proxy.		
Required Documentation	• Personal Seal to be registered • Residence Card, Special Permanent Resident Certificate, or other Photo Identification issued by a government agency such as a Driver's License (restricted to identification within its period of validity) , Identification that can be used to confirm your identity, etc.		

※If you require a paper Registered Personal Seal Certificate, please request one at City Hall. (Fee : ¥200)

## ④ My Number Card Procedure (Citizen's Affairs Division ☎0994-31-1114)

My Number (Individual Number) is only one number per person.

This is required for various procedures at the national, prefectural, and municipal governments, as well as for health insurance and tax procedures. Do not show your Individual Number to others except for procedures.

Consultation Desk	Citizen Affairs Division, Any General Citizen's Support Service Division, or Any Branch Office
-------------------	--

## ⑤ Regarding Taxes (Tax Division ☎0994-31-1112)

Procedures and consultations are available here for municipal and prefectural taxes, fixed asset tax, light vehicle tax, corporate citizens' tax, etc.

# Pregnancy and Children's Programs

## ① Pregnancy Procedures (Health Promotion Division ☎0994-41-2110)

This booklet is issued during pregnancy and is used to record information regarding the mother and child's health, including the mother's health conditions during pregnancy, the child's growth, the outcomes of various health examinations, etc. This booklet is required when visiting the obstetrician-gynecologist.



## ② Procedures for When a Child is Born (Citizen Affairs Division ☎0994-31-1114)

The paperwork must be completed and submitted within 14 days of birth (including the day of birth).

## ③ Systems for Parents and Guardians

### ◆ Regarding Infant Health Examinations (Health Promotion Division ☎0994-41-2110)

Regular health checkups are opportunities to check the health and growth of your baby according to the age in months and years, and to talk about your worries you may have about raising your child. You will be notified when your child is 3 months, 7 months, 9 to 11 months, 1 year and 6 months, 2 years and 6 months, and 3 years and 6 months old. Have a checkup.

### ◆ Children's Vaccinations (Health Promotion Division ☎0994-41-2110)

Children will undergo various vaccinations including Tuberculosis, Diphtheria, Whooping Cough, Tetanus, Polio, Measles, Rubella, Japanese Encephalitis, etc. at the designated medical institutions.

### ◆ Children's Medical Expense Assistance Program (Parenting Support Division ☎0994-31-1134)

#### Children's Medical Expense Assistance

Medical expenses resulting from normal medical examinations for children up to age 18 are eligible to receive monetary assistance.

#### Single Parent Medical Expense Assistance

Single mothers and fathers are eligible to receive assistance with their children's medical expenses resulting from normal medical examinations. Assistance is subject to income and other restrictions.

### ◆ Childrearing Assistance (Parenting Support Division ☎0994-31-1134)

This allowance is provided to those who are raising a child or children up to 15 years of age. However, from October 2024, this allowance will be provided to those who are raising a child or children up to the age of 18.

### ◆ Child Support Compensation (Parenting Support Division ☎0994-31-1134)

This is compensation for children who have only one parent, who have a parent with a severe disability, or for guardians who are raising a child in place of the child's parents.



### ◆ Nursery School (Parenting Support Division ☎0994-31-1134)

This is a facility that accepts pre-elementary school age children whose parents cannot look after them for reasons such as they must go to work, etc.

## ④ Consultation and Reporting Child Abuse (Parenting Support Division ☎0994-35-1061)

Call the number above if you know or think a child in your area is a victim of abandonment, or physical or sexual abuse.

# Welfare System

## ① System for Persons with Disabilities (Welfare Coordination Division ☎0994-45-4726)

### ◆ Disability Booklet Issuance & Medical Expense Assistance Program for Severely Disabled Persons

Persons with physical disabilities, intellectual disabilities, or mental disabilities are eligible to apply for a disability certificate.

By holding a disability certificate, persons with disabilities are eligible to receive various welfare services for persons with disabilities, and also use systems such as tax exemptions and discounts on public transportation fares.

In addition, there is a system to subsidize the co-payment of medical expenses (limited to those covered by insurance) for those with severe physical or intellectual disabilities.

## ② When Nursing Care is a Necessity (Senior Citizen Welfare Division ☎0994-31-1116)

### ◆ Nursing Care Insurance System

This system provides long-term care insurance services such as home-visit nursing care and day-care services and is eligible for bedridden persons or persons suffering dementia, etc. who applied for a care-needs assessment when nursing care in daily life is needed and are authorized their necessity of long-term care through the assessment.

Those aged 40 and above are required to pay long-term care insurance premiums.

## ③ Regarding Health Diagnoses

### ◆ Specific Health Checkups (Health Insurance Division ☎0994-35-1014)

Specific health checkups are provided once a year for those who are enrolled in the National Health Insurance Plan and aged 40 to 74 years.

### ◆ Longevity Health Checkups (Health Insurance Division ☎0994-35-1014)

Longevity health checkups are provided once a year for those who are enrolled in the Advanced Elderly Medical Insurance.

### ◆ Cancer Screenings, etc. (Health Promotion Division ☎0994-41-2110)

The following cancer screenings are provided.

Contact us for more details such as procedures to receive checkups

Stomach Cancer Screening

Uterine Cancer Screening

Lung Cancer Screening

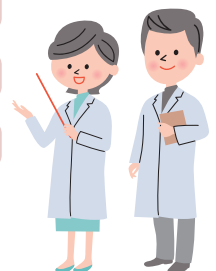
Breast Cancer Screening

Large Intestine Cancer Screening

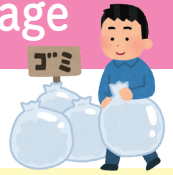
Osteoporosis Examination

Prostate Cancer Screening

Abdomen Ultrasound Examination



# How to Separate and Dispose of Household Garbage



Trash Disposal Rules (Living Environment Division ☎0994-31-1115)

## ① Separated Garbage is Collected on Specific Days

- Check the "Trash Calendar" for garbage collection days.
- Garbage Calendar is available at the City Hall Main Office, each General Branch Office, and each Learning Center.

## ② Trash is to be Placed at Your Neighborhood Trash Station

### Burnable Trash

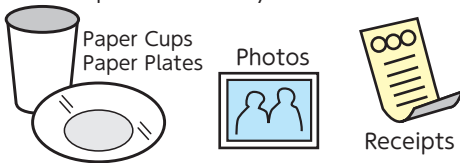
#### If Disposing of Raw Kitchen Garbage

Drain appropriately and dry as much as possible.



#### Unrecyclable Paper

Paper that is dirty, painted, or processed by machines

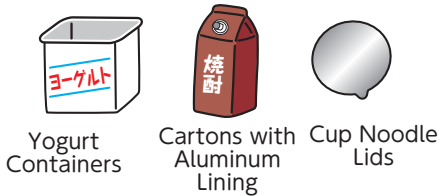


These bags can be purchased at stores like convenience stores or supermarkets.

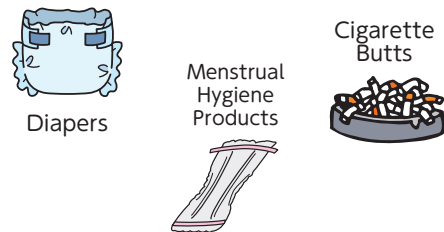


Designated Trash Bags (Blue)

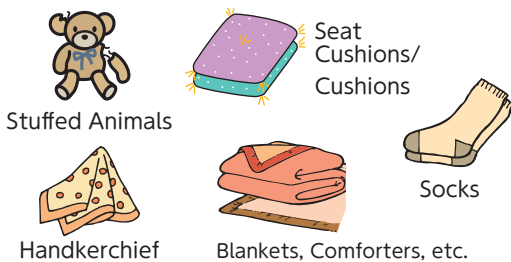
#### Paper Coated with Plastic or Aluminum



#### Sanitary Items



#### Unrecyclable Fabric



#### Leathers





# How to Separate and Dispose of Household Garbage

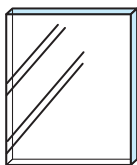
## ③ Take Your Trash Out by 8 am on the Specified Trash Day

Taking your trash out the night before is not allowed.

## ④ The Type of Trash Bag Used Depends on the Type of Trash. You Must Use the Correct Trash Bag

### Non-Burnable Trash

#### Glass



Glass



Mirrors



LED Lightbulbs



Cups



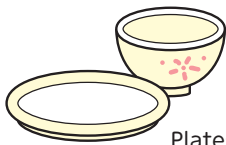
Incandescent Lightbulbs

※Wrap broken glass or ceramic with newspaper and write "きけん" on it.

#### Ceramics



Teacups



Plates, Bowls



Earthenware



Plant Pots



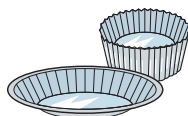
Flower Vases

#### Others



Aluminum Foil

Aluminum Cups, Plates



Lighters



Metal Caps



Umbrellas



These bags can be purchased at stores like convenience stores or supermarkets.

# How to Separate and Dispose of Household Garbage


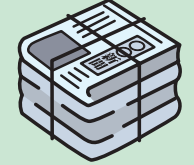

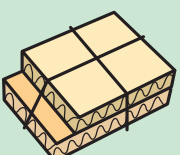


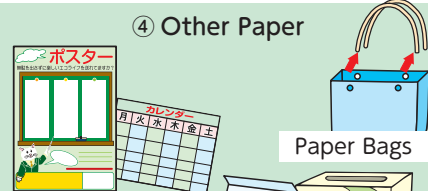
In Kanoya, we are committed to recycling various items such as newspaper, PET bottles, empty cans, etc.

## Recyclables ①

Please dispose of items in categories (A)~(H) separately from each other.

### (A) Paper

Tie up paper and take to your neighborhood trash station.

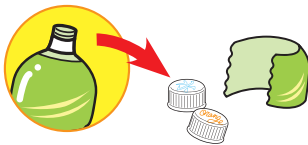
<p>① Newspapers, Flyers</p>  	<p>② Cardboard</p>  <p>※ Remove Masking Tape</p> 	<p>③ Magazines</p>  	<p>④ Other Paper</p>  <p>Calendars</p> <p>※ Small memo paper larger than business card size</p> <p>Paper Tubes</p> <p>Paper Towel Tubes Aluminum Foil Tubes</p> <p>Toilet Paper Tubes</p> <p>※ Hard paper tubes like wrapping paper tubes are to be disposed of with burnables. (See page 14)</p> <p>Paper Bags</p> <p>Empty Boxes</p> <p>※ Collapse Boxes in order to Reduce Bulk</p>
---	---	--	--

### (B) PET Bottles



Rinse the inside and do not crush them.

※ PET Bottles that have been written on, cut up, or dirty are to be disposed of with burnables.



※ Be sure to take the caps and labels off and dispose of them as **plastics items**. (See page 18)

### (C) Glass Bottles

Rinse glass bottles that contained edible content and allow to dry.

#### ① Reusable Bottles



※ Alcohol bottles, such as shochu and beer bottles

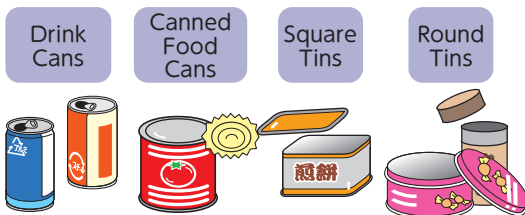
#### ② Single Use Bottles



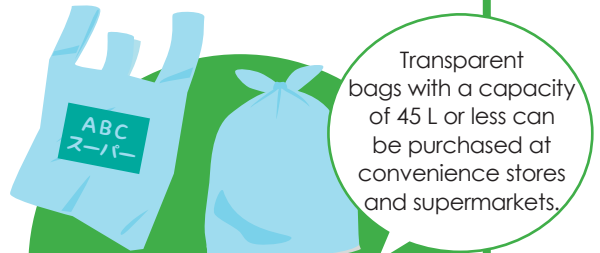
※ Bottles such as wine bottles and olive oil bottles

Place items in ① and ② in separate bags.

### (D) Empty Cans



Rinse metal cans that contained edible content and allow to dry.



Transparent bags with a capacity of 45 L or less can be purchased at convenience stores and supermarkets.

Dispose of garbage (A) through (D) into transparent bags with a capacity of 45 L or less, in which the contents can be seen.

# How to Separate and Dispose of Household Garbage

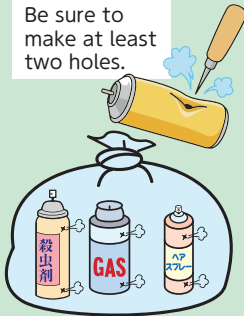
## Recyclables ②

Please dispose of items in categories (A)~(H) separately from each other.

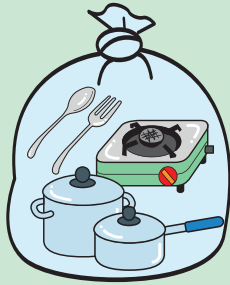
### (E) Metal Goods

#### ① Spray Cans

Be sure to make at least two holes.



#### ② Other Metal Goods



Place items in ① and ② in separate bags.

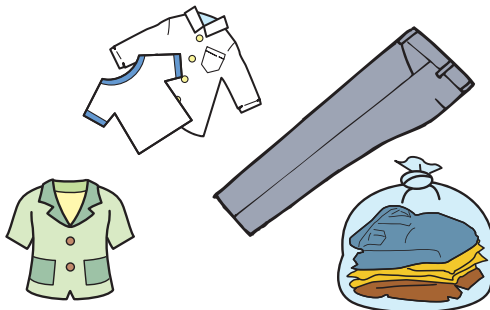


Dispose of garbage into transparent bags with a capacity of 45 L or less.

Transparent bags with a capacity of 45 L or less can be purchased at convenience stores and supermarkets.

### (F) Clothes and Fabric

You can dispose of clothes as they are with zippers and buttons.



Underwear, Curtains, Socks, Cushions, Stuffed Animals, Handkerchief are to be disposed of with **burnables** (See page 14)

### (G) Small Household Electronics



Digital Cameras



Hair Dryers

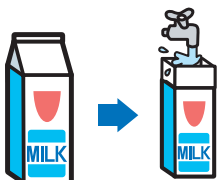


Telephones

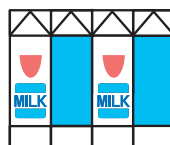
Remove and dispose of batteries in the designated **deposit boxes** (See page 18)

### (H) Paper Cartons

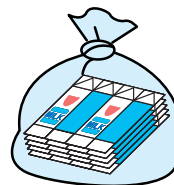
Dispose of after opening, rinsing the inside, and allowing to dry.



① Rinse the inside of the carton.



② Open from the glued edge.



③ Allow to properly dry and dispose of in a bag.

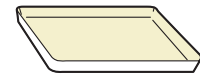
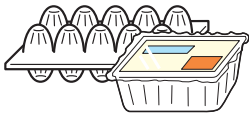
• Cartons with aluminum inner linings are to be disposed of with **burnables** (See page 14)



# How to Separate and Dispose of Household Garbage

## Plastics Items

Plastic Egg Cartons and Tofu Containers, etc.



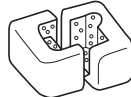
Trays holding fresh food, etc.

Plastic Bottles containing Detergent, Shampoo, Conditioner, Lotion, etc.



Transparent bags with a capacity of 45 L or less can be purchased at convenience stores and supermarkets.

Labels and Caps of PET Bottles



Styrofoam

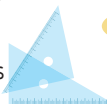
Dispose of garbage in a transparent bag of 45 liters or less. (Plastic bags from supermarkets, etc. are not acceptable.)



Daily use products such as dustpans



Stationery such as plastic rulers



Kitchen utensils such as measuring cups



Toiletries

\* Only bags made of 100% plastic with a size of less than 50 cm per side and a thickness of less than 5 mm.

## Trash Not Collected by the City

This outlines how to process trash that you cannot dispose of at a trash station.

### Home Appliance Recycling ※The 4 Home Appliances

Air Conditioners



Televisions



Refrigerators



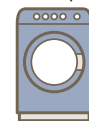
Please request garbage pickup and disposal by the method ① or ② stated below.

#### ① Disposal of items that you have been using

Call one of the following stores to request pickup and disposal. A fee is charged for the pickup/disposal.

Store Name	Address	Telephone Number
K's Denki Kanoya Store	3591-16, Asahibaru-cho, Kanoya City	0994-40-0120
Yamada Denki Techland Kanoya Store	3656-1, Fudamoto 2-Chome, Kanoya City	0994-42-7231
Marujin Ltd.	13451-1, Oura-cho, Kanoya City	0994-43-0110

Washing Machines and Dryers



#### ② Disposal of the old one as you buy a new one from the store

Ask the store for pickup/disposal. A fee is charged for the pickup/disposal.

## Collection Box Items

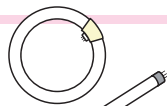
Bring the waste to the collection boxes located at 22 places in the City.

As for the location of collection boxes, access the City's Website or contact the Living Environment Division (☎0994-31-1115).

Batteries

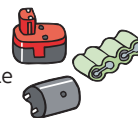


Watch Batteries



Fluorescents

Rechargeable Batteries



Lithium-ion batteries



For items that do not fit in the designated paid bags, bring them to the Kimotsuki District Clean Center.

Address	3893-8, Shimo-Obaru, Kushira-cho, Kanoya City	☎0994-63-0168
Collection Times	Monday-Saturday, Every 3 <sup>rd</sup> Sunday (excluding New Year's)	
Handling Fees	¥80 per 10kg	

**Bulk Garbage**  
(Burnable & Non-Burnable)

# How to Ride the Bus

## 1 Look up for the Name and Location of your Departure and Arrival Bus stops



## 2 Look up the Bus Schedule.

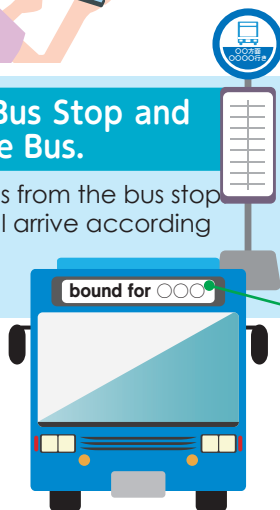
The bus timetable will be written at the bus stop.

Or, you can search for "Kyushu Bus Schedule" or "Navitime" online.

**! Be careful as the bus schedule is different on Weekdays, Saturdays, Sundays, and Holidays.**

## 3 Go to the Bus Stop and Wait for the Bus.

You can board the bus from the bus stop. Typically, the buses will arrive according to the exact times on the schedule.



## 4 Check the Bus Destination

When the bus arrives, check the display for the bus's destination and confirm if that is the bus you want to ride. If you are unsure, ask the bus driver.

## 5 Ride the Bus

When the door to the bus you want to ride opens, board the bus. There are both front-boarding and rear-boarding buses.

**You must take the bus ticket when you board the bus.**



## 6 Signal that you want to Get Off the Bus

When the name of your arrival bus stop is displayed on the board, push the Stop Button near your seat.

**If you do not push the Stop Button, the bus will not stop.**



## 7 Pay the Bus Fare

- The bus fare will be displayed on a board near the bus driver's seat. Check the number on the ticket you received when you boarded with the fare written underneath that number on the board.
- Pay the bus fare by cash. The fare box is next to the bus driver's seat.

- ※Exact Change Only.
- ※The bus driver can exchange ¥100, ¥500, and ¥1000 for smaller coins.
- ※The bus driver cannot accept ¥5000 or ¥10,000 bills.

## 8 Get Off the Bus

Leave the bus from the front door.



# Public Transportation Systems

## ◆ BUS NAVITIME

(Smartphone App)

This allows you to search various bus information such as bus stop locations, timetables, and bus routes to the destination.



iOS version



Android version

## ◆ Public Transportation Systems in Kanoya City



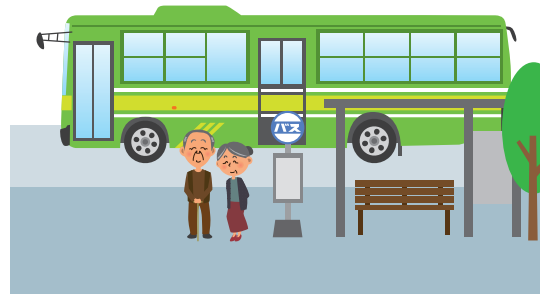
## ◆ Kururin Bus

Community bus operating within Kanoya City

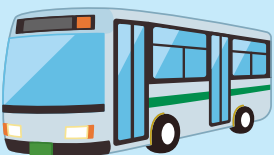


## ◆ Direct Bus between Kagoshima Chuo Station and Kanoya

No transfer between Kagoshima and Kanoya Direct bus



## ◆ Kagoshima Airport Shuttle Bus



## ◆ Fixed-Route Buses within the Prefecture and Kyushu Area



# Daily Life & Bicycle Rules

## ① Use Your Everyday Manners

### ○ Public Area Rules

- Shouting in public areas or in your residence may be bothersome to people around you. Please be courteous.
- Wait your turn in line in public areas.
- After using any public facility or room, clean up and neatly organize the area.
- You may only smoke in designated smoking areas. Refrain from smoking in areas where there are a lot of people.

### ○ Public Transportation Rules

- Refrain from making phone calls while riding the buses or trains.



## ② Follow the Rules when Riding a Bicycle

### ○ Bicycle Rules

- Bicycles are friends with cars. As a general rule, bicycles are to be ridden on the edge of the left side of the road.
- Pedestrians are to be given priority on sidewalks. When riding on the sidewalk, go slowly and ride in the same direction as the cars.
- Turn on your bike light when riding in the dark.
- Be sure to wear a helmet.



### ○ The Following Acts are Prohibited:

- Two People Riding on One Bike
- Riding in Parallel
- Biking while Intoxicated
- Riding while using an Umbrella or Cell Phone

### ○ Bicycle Damage Insurance Enrollment

- Enroll in Bicycle Damage Insurance to be prepared in the case that you accidentally injure another person when using your bicycle.



## Publishing

Kanoya City  
(Regional Promotion Division)  
〒893-8501  
20-1 Kyoei-cho, Kanoya City  
Kagoshima Prefecture  
☎0994-43-2111

## Kanoya City and Event Information, etc.

【Kanoya City Website】  
<https://www.city.kanoya.lg.jp>

Kanoya City

【Kanoya International Exchange Association Website】  
<http://kiea.ne.jp>

Kanoya International Exchange

【Kanoya City Smartphone App】  
Kanoya Life



iOS  
version



Android  
version



Kanoya is committed to achieving the United Nations' Sustainable Development Goals.